



**PROPOSAL FOR REGIONAL
IMPLEMENTATION OF THE KINGS
UNIVERSITY PROJECT OF MLPML**



EXECUTIVE SUMMARY

The Kings University Project of MLPML is a comprehensive after-school and bi-weekend mentoring program aimed at reducing student drop-out rates, behavior incidents, and youth crime while increasing parent involvement.

The program targets young men in 4th to 12th grade from minority groups and impoverished backgrounds. By expanding this program on a regional scale, we can replicate its success and create a broader impact across Pennsylvania.





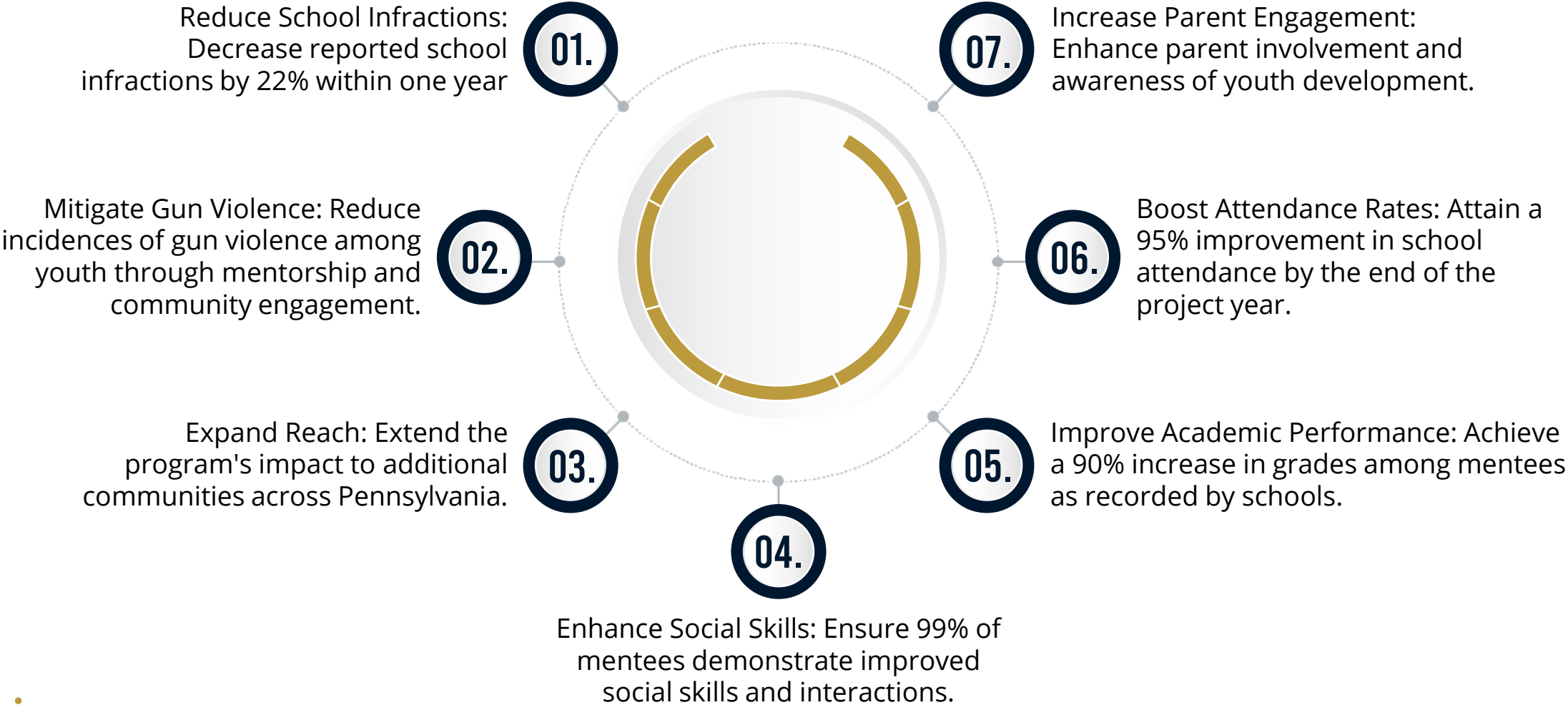
PROGRAM DESCRIPTION

The program is structured into quarterly cohorts, each serving up to 300 youth, focusing on providing a safe and supportive environment for self-expression and resilience-building job skill development and placement.

It aims to foster community leadership through active community engagement and services. The program leverages strong parental involvement, recognizing it as a key factor in the success of our initiatives.



OBJECTIVES



PROGRAM IMPLEMENTATION



Mentorship and Safe Environment

The program will continue to provide a structured and supportive space where young males can explore their identities, discuss challenges, and build emotional resilience. This is achieved through regular after-school sessions and bi-weekend workshops.



Community Leadership and Engagement

Youth will participate in community service projects and engagements designed to instill a sense of responsibility and leadership. These activities will be coordinated with community partners to address local needs and promote civic responsibility.



Parental Involvement

We will enhance parental involvement through regular communication, workshops, and joint activities. This component is crucial for reinforcing the values and skills taught in the program at home.

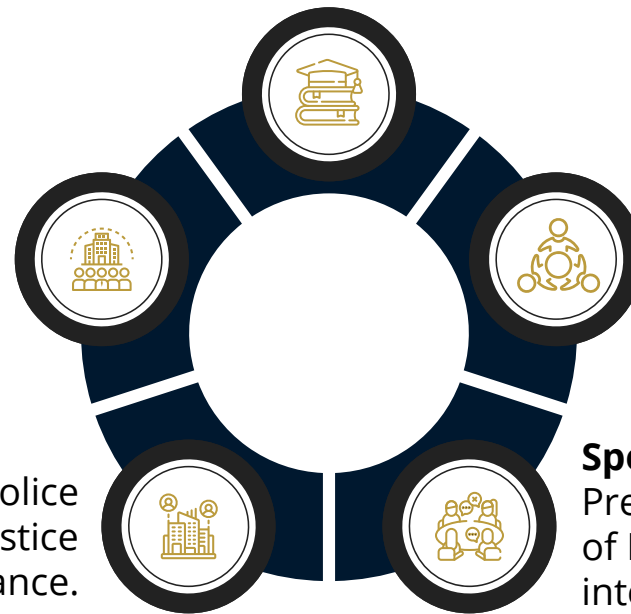
PARTNERSHIPS AND COLLABORATIONS

The success of the program hinges on robust partnerships with a diverse range of community stakeholders. Our partners include:

Educational Institutions: University of Pennsylvania and Temple University for educational resources and research support.

Corporate Entities: Toll Brothers Inc. for financial support and mentorship opportunities.

Public Service Agencies: 12th District Police Department and the Office of Criminal Justice for safety and legal guidance.



Community Organizations: Urban Affairs Coalition and Philadelphia Youth Network for community engagement and resources.

Specialized Groups: Office of Violence Prevention and Black Nonprofit Chief Executives of Philadelphia (BNCEP) for targeted interventions and inclusive growth initiatives.



MEASURING SUCCESS

We will employ a mixed-methods approach to evaluate the program's impact, including:

01.

Quantitative Metrics:

Tracking school infractions, grades, attendance rates, and crime statistics.

02.

Qualitative Assessments:

Conducting surveys and interviews with participants, parents, and partners to gauge improvements in social skills and community engagement.



EXPANSION PLAN

To scale the program, we will:

Conduct Needs Assessments:

Identify communities with high drop-out rates, behavior incidents, and youth crime.



Train Facilitators:

Develop a training program for new mentors and staff.



Engage Local Stakeholders:

Establish local partnerships and secure funding.



Monitor and Evaluate:

Implement continuous monitoring and evaluation to ensure the program's effectiveness and make necessary adjustments.



CONCLUSION

Expanding The Kings University Project of MLPML on a regional scale will create a significant positive impact on young men in the Tri-State Area.

By providing a comprehensive support system, fostering community leadership, and enhancing parental involvement, we can address critical issues such as school infractions, gun violence, and academic performance.

Our robust network of community partners will ensure the program's sustainability and effectiveness, ultimately contributing to the well-being and development of our youth.



We invite educational institutions, corporate entities, public service agencies, and community organizations to join us in this mission. Together, we can create a brighter future for our youth and communities across Pennsylvania.